

C O O L

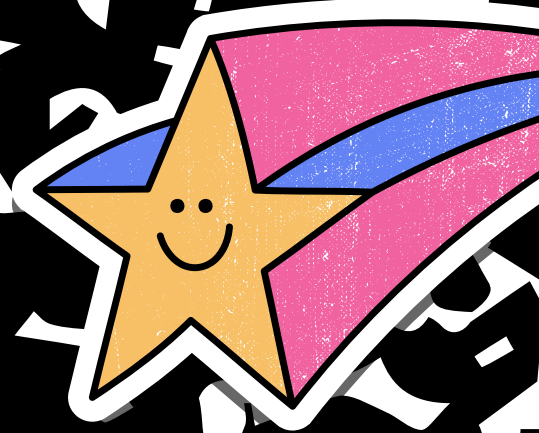
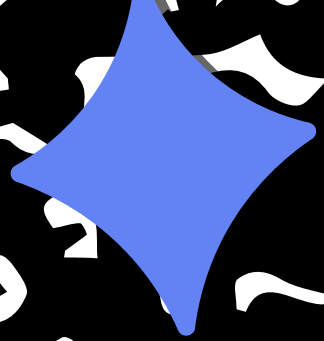
# BEAR NECESSITIES

---

Winter Springs High School

---

24-25 Curriculum Night



# Please Stand



Presentation of Colors Performed By: WSHS JROTC  
National Anthem Performed By: WSHS Chorus and WSHS ASL

# **WELCOME TO WINTER SPRINGS HIGH SCHOOL**

Madison Lewis, SGA Vice President  
Ceyda Buga, Sophomore Vice President  
Mr. Gaffney, Principal



# Graduation Requirements

Dr. K. Carpenter, Assistant Principal



## DIPLOMA PATHWAY REQUIREMENTS

STANDARD DIPLOMA PATHWAY	REQUIREMENTS (must include (1) online course)
	<p>English Credits (English 1 – English 4) or equivalent accelerated course(s)-4 credits                      Math Credits Grades (9-12) (must include Algebra 1 &amp; Geometry)-4 credits                      Science Credits (must include Biology I, (3) courses must contain a lab component, and 2 Equally Rigorously Courses)-4 credits                      Social Studies (must include World History, US History, 0.5 US Government &amp; 0.5 Economics)-3 credits                      Fine or Performing Arts, Speech &amp; Debate or Practical Art-1 credit                      ½ Personal Fitness and ½ PE Elective-1 credit                      Elective Credits-9 credits                      Have a minimum, cumulative GPA of at least a 2.0 on a 4.0 scale  <b>**An approved Computer Science course may take the place of a math or science credit**</b></p>
TESTING REQUIREMENTS	<p>Passing Score on: Grade 10 ELA FSA or concordant score &amp; Algebra 1 EOC or comparative score                      EOC's in Algebra 1*, Geometry, Biology I &amp; US History will count as 30% of the students overall grade  <b>**A passing industry certification may take the place of a science or math credit**</b>                      Industry certifications that lead to college credit may substitute for up to two mathematics credits (except for Algebra I and Geometry).                      An industry certification that leads to college credit substitutes for up to one science credit (except for Biology I).</p>

*Dream*

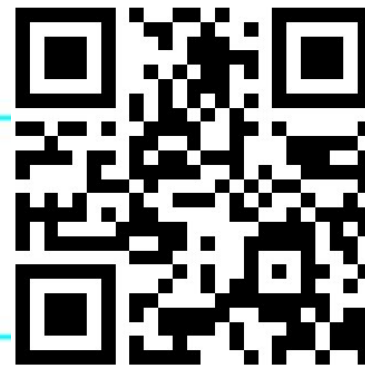


Class of 2028



# Graduation Requirements

Dr. K. Carpenter, Assistant Principal



## Winter Springs High School Freshman Registration Planning Guide 2024-2025 (non-IB)

This form is for planning purposes only. Please document your final selections on the Google Form linked below.

[Rising 9th Grader Course Selection Form](#)

If students do not submit their choices, WSHS will select their courses for them.

Course descriptions can be found on the WSHS Curriculum Guide: [24-25 WSHS Curriculum Guide \(draft\)](#)



**Virtual School Information:** For the 2024-2025 school year, SCPS will provide a full-time virtual instruction option to all students in grades K-12 through Seminole County Virtual School. Enrollment will be open at 9:00 am on Tuesday, April 2, 2024, and will close at noon on Tuesday, July 16, 2024. For more information, please see your certified school counselor or visit <https://virtualschool.scps.k12.fl.us>

### WSHS 9th Grade Academic and Required Courses

#### English (1 credit)

- English 1 Standard – 1001310
- English 1 Honors – 1001320
- English 1/ESOL – 1002300

#### Science (1 credit)

- Environmental Science (Pre-Biology) – 2001340
- Biology Standard – 2000310
- Biology Honors – 2000320
- AP Biology – 2000340
- Chemistry Honors – 2003350 (PR: Biology & Geometry)

#### Mathematics (1 credit)

- Algebra 1 Honors – 1200320
- Geometry Standard – 1206310 (PR: Alg/Alg H)
- Geometry Honors – 1206320 (PR: Alg/Alg H)
- Algebra II Standard – 1200330 (PR: Geo/Geo H)
- Algebra II Honors – 1200340 (PR: Geo/Geo H)

#### Social Studies

##### Optional elective:

- African American History Honors (semester) - 2100336
- AP Human Geography – 2103400
- US History through Film - 2100380
- No social studies elective

#### Personal Finance - WSHS recommended 10th-12th grade year

(Graduation requirement)

- Personal Finance & Money Management (semester) - 2102372
- Personal Finance & Money Management Hon (semester)-2102374

#### Physical Education (1 credit)

- Personal Fitness – 1501300 /Team Sports – 1503350
- Personal Fitness – 1501300 /Basketball – 1503310
- Personal Fitness – 1501300 /Volleyball – 1505500
- Personal Fitness – 1501300 /Weight Training – 1501340
- Personal Fitness – 1501300/Individual and Dual Sports - 1502410
- Option to take PE in a later year

### WSHS 9th Grade Elective Courses

Below are the elective choices. You will input 8 choices on the Google Form.

#### Programs of Emphasis Electives

##### Public Service Academy

- Principles of Public Service - 8900330

##### Renewable Energy

- Experimental Science & Alternative Energy Sources  
2002340/ETP2502 (Dual Enrollment) (2.5 GPA req for S2)

#### Fine Arts Electives

- 2-D Art – 0101355/ 3-D Art – 0101365\*
- 2-D Art – 0101355/ Drawing 1 – 0104340\*
- 2-D Art – 0101355/ Painting 1 – 0104370\*
- Acting 1 – 0400370\*
- Band – 1302300\*
- Chorus – 1303300\*
- Jazz Band – 1302500 (audition only)\*
- Gospel Chorus – 1303360\*
- Intro to Drama - 0400300/Improvisation - 0400620\*

#### Computer Science Electives

- AP Computer Science Principles - 0200335
- AP Computer Science A - 0200320  
(PR: Geo Honors or AP Comp Sci P)

#### Dual Enrollment Courses

Students **MUST** meet dual enrollment requirements to be placed in these courses. This includes having completed at least one high school course, a minimum 2.5 GPA and completing the Dual Enrollment Application by the deadline. Information on Dual Enrollment can be found here: [SCPS Dual Enrollment Information](#)

- DUAL ENROLLMENT: SLS 1301C Life and Career Planning
- DUAL ENROLLMENT: 1501300 College Success – SLS 1101

Latinos in Action and Yearbook require an application. Applications can be found in the Google Form.

\*Indicates Performing/Fine/Practical Art credit toward graduation.

#### Career and Technical Education Electives

##### The Culinary Arts Academy

- Culinary Arts 1 – 8800510

##### The Design Academy

- Digital Information Technology – 8207310\*
- Digital Photography 1 – 8201310\*

##### The Television Production Academy

- Television Production 1 – 8201510\*

#### World Language Electives

- American Sign Language 1 – 0717300
- American Sign Language 2 – 0717310
- Latin 1 – 0706300
- Spanish 1 – 0708340
- Spanish 2 – 0708350

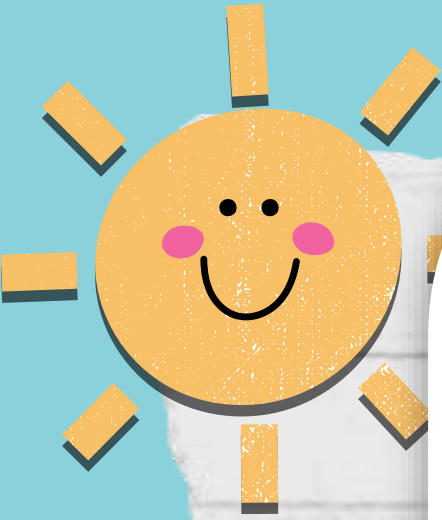
#### General Electives

- Army JROTC (YR) – 1801300
- Critical Thinking Skills- 1700370
- Debate Honors – 1007350\*
- Engaged Citizenship through Service Learning- [2104350EC](#)
- Newspaper (application) - [1006331YN](#)
- Student Life Skills 1 -0500500
- Young Men of Excellence (2.5 GPA req)- 1400300M1
- Young Women of Excellence (2.5 GPA req)- 1400300W1

# WSHS 24-25 Curriculum Guide Video

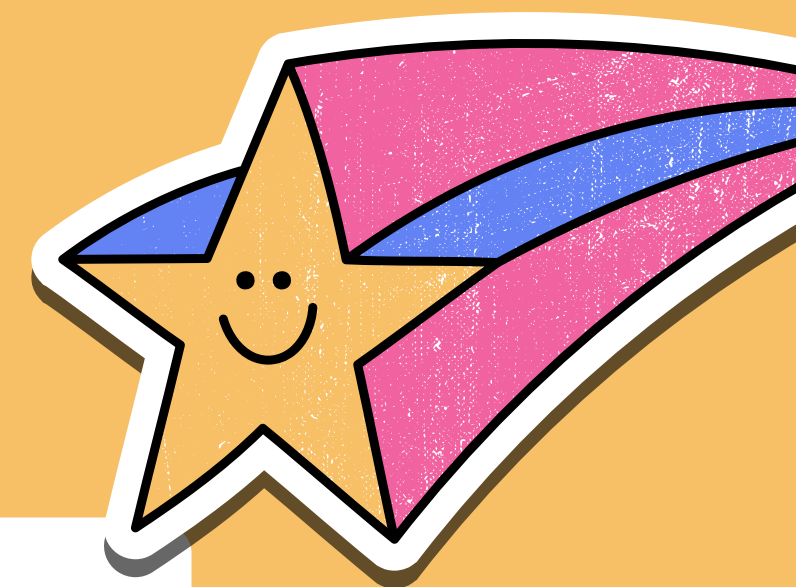
SUPER

Created By: WSHS Television Production Students



# Engaging Experiences

Winter Springs High School



Leo Moreira



Callie Clabo



Ceyda Buga



Zach Roz



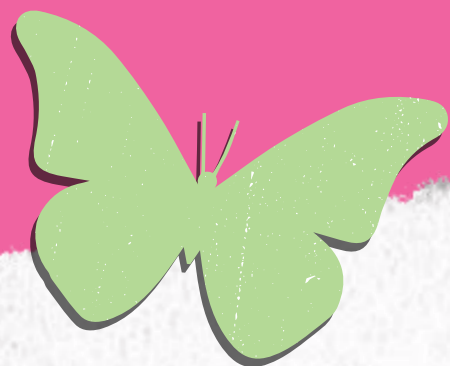
Kloe Foy



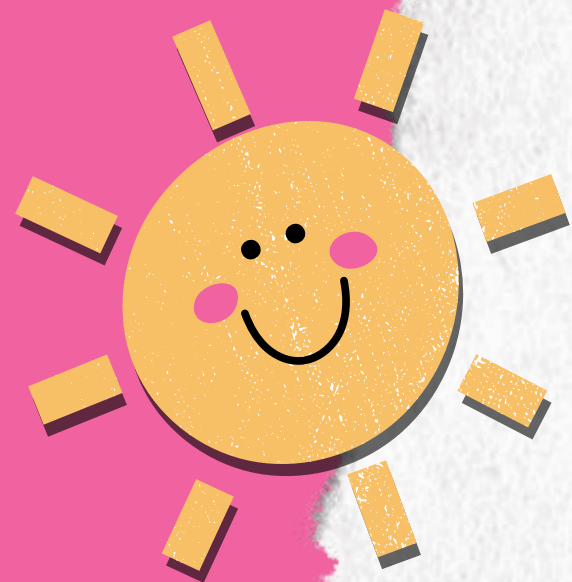
Richard Dannelly



Gianna Garcia



# American Sign Language





# Behind the Curriculum Q & A Session



Mrs. Whyde

Assists: Students with last names A- Faw;  
9<sup>th</sup> Grade ELL



Mrs. McBryde

Assists: Students with last names Fe-Mile



Mrs. Lash-Walker

Assists: Pre-IB, IB Students;  
Students with last name Mili- Rivera, Ja



Ms. Urena

Assists: Students with last name Rivera, Je-Z;  
10<sup>th</sup> – 12<sup>th</sup> ELL Students



Ms. Spence

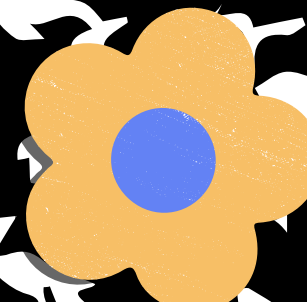
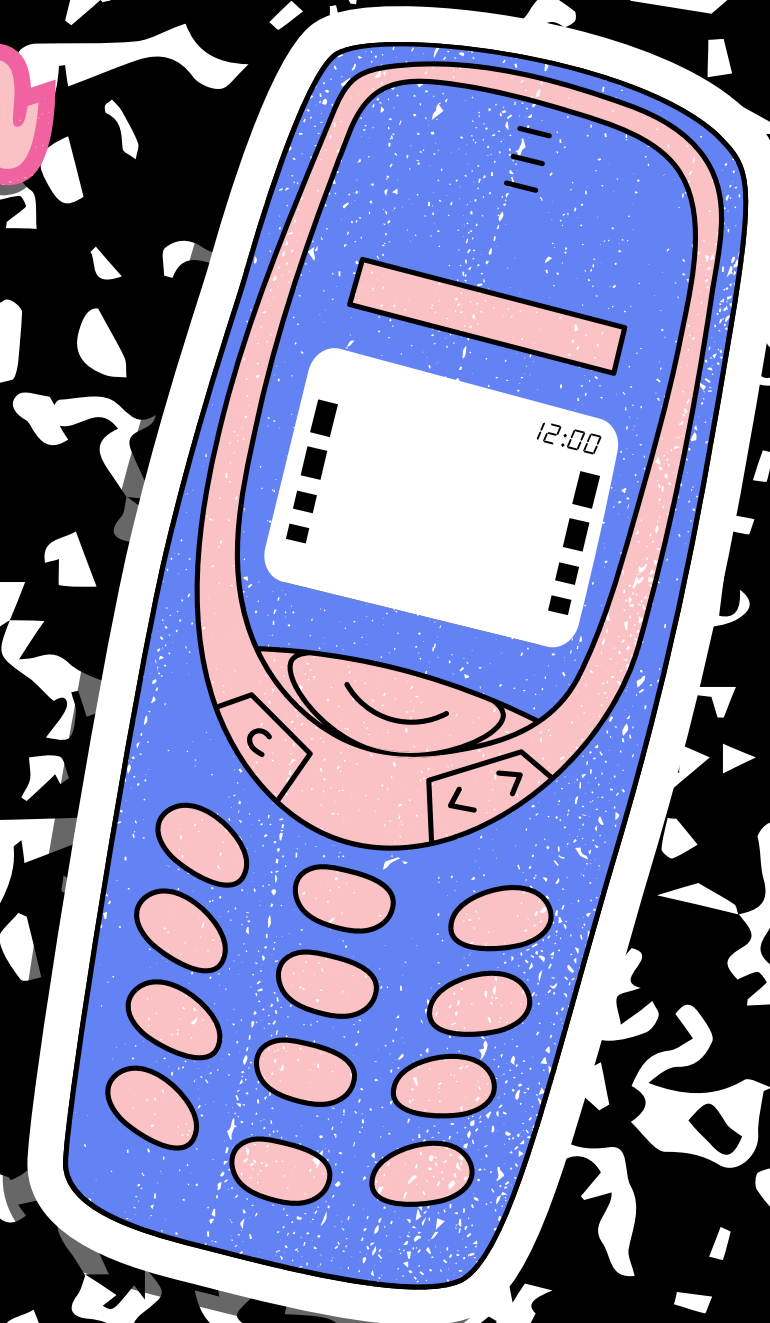
Assists: Students with IEPs (ESE)



COOL

**Thank you!**

*Dream*



# Teacher Resources Page

Find the magic and fun in presenting with Canva Presentations.  
Press the following keys while on Present mode!

 **B** FOR BLUR

 **D** FOR A DRUMROLL

 **C** FOR CONFETTI

 **O** FOR BUBBLES

 **Q** FOR QUIET

 **X** TO CLOSE

 **#** ANY NUMBER FROM 0-9 FOR A TIMER